

WELCOME TO

# MILDURA

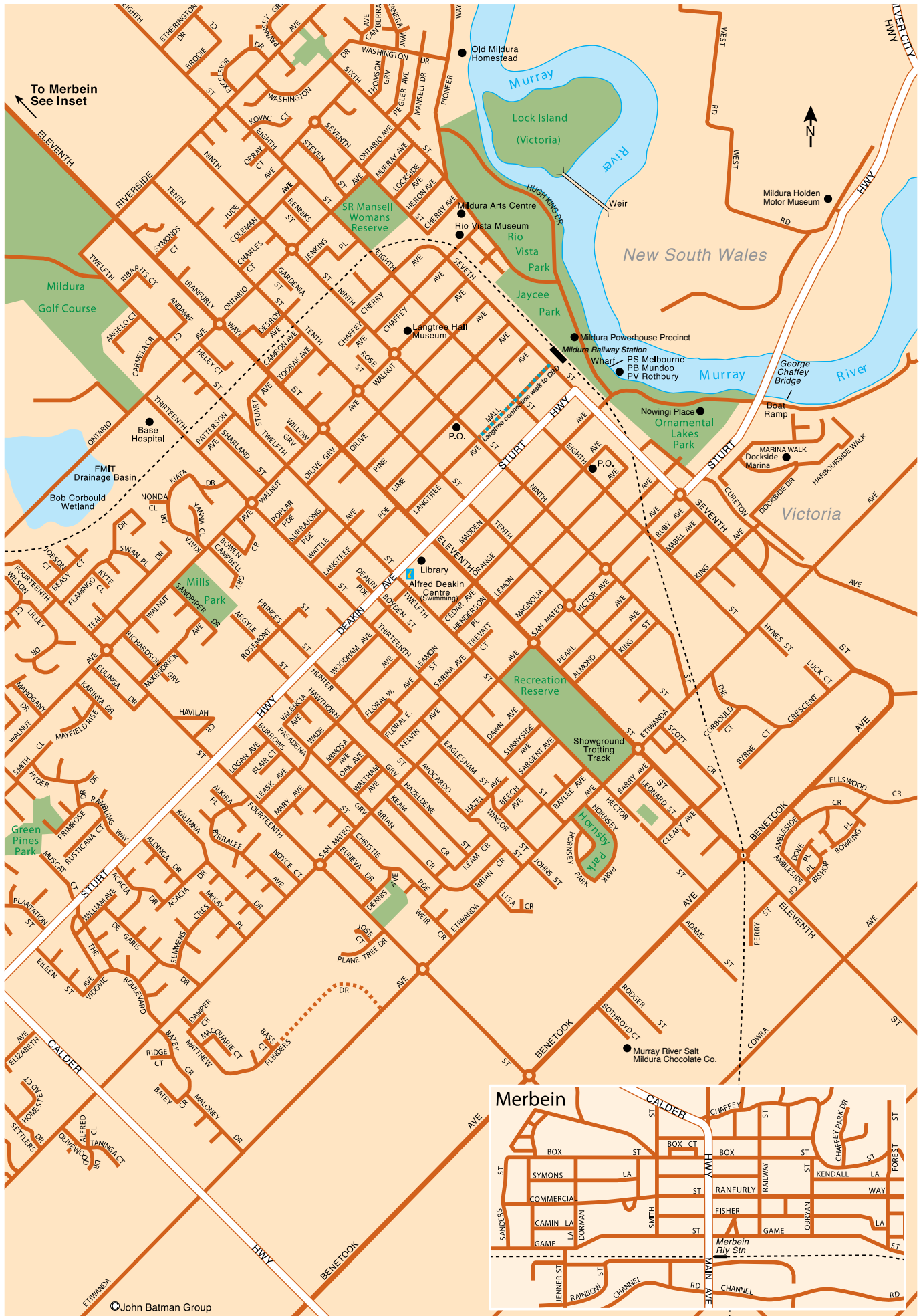
ATTRACTIONS - MAPS - EVENTS - SERVICES

JUST BRILLIANT GUIDES



DIGITAL EDITION









Mildura, Credit: Murray Regional Tourism



Mildura streetscape, Credit: Murray Regional Tourism

## WELCOME TO

# MILDURA

Mildura is the regional city centre of the Mallee and is renowned for the bountiful produce of its rich red soil.

Mildura, meaning 'red earth', is Victoria's most northern regional city. It might have been more aptly named for its exceptional amount of sunshine. With a combination of great weather and fertile soil, the region is a prime location for horticulture.

Mildura is renowned for its abundant produce and is the major producer of dried fruit and table grapes in Australia. Other local produce includes citrus fruit, olives, almonds, pistachios, asparagus and carrots. The region is also known for its wine varieties and boasts over 34 wineries. The first grapes were planted as far back as 1888, so the area is well versed in the art of producing tasty wines. Be sure to visit some of the cellar doors in the region and try a traditional drop of some of the newer varieties.

Taking advantage of the clean environment and access to unique local botanicals, beer brewers and spirit distillers are producing spectacular brews at Mildura Brewery, and gins, whisky, rum and vodka at Fossey's Distillery.

Mildura is a town steeped in history and its classic appeal is that it is set on the banks of the majestic Murray River. There's plenty of aquatic adventures to indulge visitors such as kayaking, canoeing and paddle boarding. For something a little more relaxing, take a cruise along the mighty Murray River.

By the riverbanks, twice-monthly farmers' markets provide an opportunity to connect with local growers and select your own local produce. Additionally, the area captivates visitors with its vibrant arts and cultural scene, featuring numerous compelling galleries and an increasing array of community art initiatives, such as the Mildura City Heart Community Art Trail.

You can explore the natural wonders of the surrounding countryside, walking, cycling, bird watching, fishing, kayaking and camping.

Crossing the river and venturing past Wentworth, discover the Perry Sandhills, experience the Canopy Tree's lofty branches and the dunes' summit, and gain a true understanding of the vastness and seclusion of this Australian region. If you have the luxury of time, the World Heritage-listed Mungo National Park beckons you to explore its wonders.

Mildura is a vibrant regional city full of contrast waiting to be explored. From the Murray River to the outback, there's something here for everyone.

Stop by the Mildura Visitor Information and Booking Centre located at 180-190 Deakin Avenue for more information on the region.



Whether you're a regular visitor or staying for the first time, welcome and thank you for choosing to experience everything our wonderful region has to offer.

We're fortunate to feature a large and diverse range of dining experiences from our amazing restaurants, cafés, bars and retail outlets offering something for all interests .

While there's plenty to see and do in our city's CBD, make sure you take the time to explore the numerous smaller towns dotted across our region. Each has its own character and attractions with many 'hidden gems' you will talk about on your return home.

While much of our tourism appeal stems from our natural attractions like the river and nearby national parks, our welcoming people and friendly communities are also key to our region's appeal as a top visitor destination.

We have a packed calendar of events year-round, taking in everything from the performing arts, farmers markets and exhibitions through to our flagship powersports events.

We hope you enjoy your stay and we look forward to welcoming you back again soon.

Cr Liam Wood

Mayor

**Mildura Rural City Council**

mildura



Mildura, Credit: Murray Regional Tourism



Mildura Riverfront Aerial, Credit: Visit Mildura





Christie  
CENTRE

## SOCIAL ENTERPRISES

seeing the greatness in each individual



### Mildura Chocolate Company tastes good | does good

Award-winning chocolates made from premium locally sourced ingredients. Chocolate bars, coated produce and gift hampers, perfect for gifts and events.

visit [mildurachocolatecompany.com.au](http://mildurachocolatecompany.com.au) to order online or our kiosk Spark at Powerhouse Place

03 5023 6465

[info@mildurachocolatecompany.com.au](mailto:info@mildurachocolatecompany.com.au)



### GrowAbility Nursery locally grown

An extensive range of drought-tolerant plants in tube-stock through to advanced sizes; plus advice from experienced staff who know the local conditions.

363 Cureton Avenue Mildura | 03 5021 4117  
[nursery@christiecentre.com.au](mailto:nursery@christiecentre.com.au)



### Aroundagain

reduce | reuse | repurpose

Visit our shop and sale yard to explore our current range of vintage items, collectibles, second-hand furniture, household goods, building materials and more.

13 Scherger Drive Mildura | 03 5021 0739  
[aroundagain@christiecentre.com.au](mailto:aroundagain@christiecentre.com.au)



### Spark

Visit our Inspiration Point and Kiosk at the Powerhouse Precinct. We are open 7 days a week, 10 - 4 offering a range of Grab-and-Go food, snacks, hot and cold drinks. As well as tourist advice we have on offer a variety of locally sourced produce along with mementos and souvenirs.

122 Hugh King Drive Mildura  
03 5023 2761



REGISTERED  
NDIS  
PROVIDER



MILDURA



## COME AND EXPERIENCE OUR FAMOUS MILDURA HOG'SPITALITY

AN ICON FOR GOOD TIMES, GOOD FOOD,  
COLD BEERS AND GREAT ATMOSPHERE

Monday – Sunday | 11:30AM – 9:00PM

134/152-164 Deakin Avenue, Mildura

(03) 5023 0000

Order Online Or Book A Table

[www.hogsbreath.com.au/location/mildura](http://www.hogsbreath.com.au/location/mildura)



Benetook Farm is a social enterprise operated by people with disabilities and managed by Sunraysia Residential Services Inc, a local not-for-profit community organisation that have been providing aged care and disability support for over 40 years.



Open daily from 9am- 4pm

Benetook Farm offers a beautiful community space for all of the family to come together and enjoy a day out.

Feed our free range chickens and collect eggs

Enjoy picking strawberries with friends or have a picnic lunch on the grass areas

Ride our pedal cars and bikes – including an amazing accessible wheelchair bike

Enjoy a coffee and cake from our cafe' while checking out the incredible Melbourne vintage tram and tractor display

Playground and jumping pillow!

Visit the General Store - full of antiques and upcycled creations.

1022 Benetook Avenue,  
Mildura VIC 3500



We can't wait to see you at Benetook Farm!

[srsinc.com.au](http://srsinc.com.au) | (03) 4014 9505





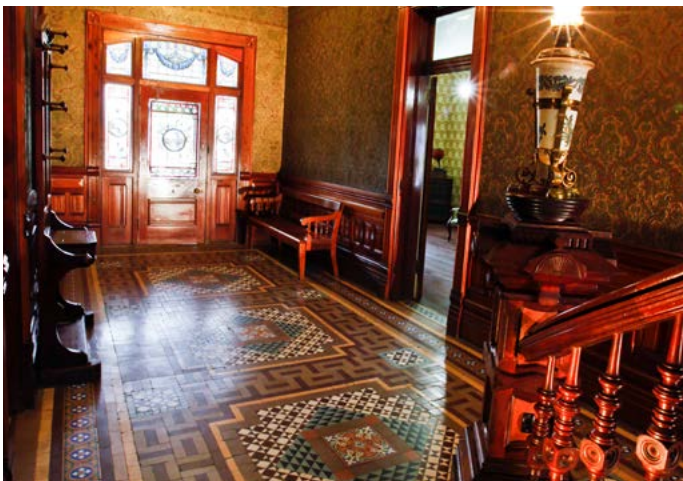
Mildura Paddlesteamer cruising the Murray, Credit: Visit Mildura



Gol Gol Boat Ramp, Credit: Visit Mildura



Psyche Pumps, Credit: Visit Mildura



Rio Vista House, Credit: Visit Mildura

## THINGS TO

# SEE & DO

Mildura boasts a range of attractions and activities that will keep the whole family entertained.

## CRUISE THE MURRAY

Situated in a prime location along the Murray River, Mildura offers a variety of cruise options. Ranging from a couple of hours by original steam driven paddlesteamers, to lunch and dinner cruises complete with live music, to several days on a luxury or budget houseboat, there's something here for everyone.

## RIVER ACTIVITIES

If you're keen for some outdoor river activities, kayaking, canoeing and stand-up paddle boarding are popular in the region. Alternatively, you can throw a line in at Kings Billabong, or fish for some famous Murray cod along the Murray River. Just remember, a current NSW fishing licence is required if you do plan to fish.

## FAMILY FUN

There's a range of entertainment choices in the region, which will keep the kids entertained for hours. Options include mini-golfing, tenpin bowling, arcade gaming, laser tag, strawberry picking, local playgrounds and a gem shop. For a fun and educational activity visit Orange World which provides informative tours of citrus and avocado groves.

## EXPLORE MILDURA'S ART SCENE

The Mildura Art Centre Gallery and other local galleries exhibits showcase local, emerging and notable artists. Explore large scale art works and murals throughout the region.

## MILDURA CITY HEART COMMUNITY ART TRAIL

Walk the streets, explore the laneways, stop a moment to take in the vibrant and lively art scene of Mildura with Mildura City Heart's Mural Art Project.

Embark on a walking tour to marvel at the expansive artworks crafted in and around Mildura's City Heart. Stretching from the mid-1940s to the present day, numerous murals from both local and visiting artists adorn the CBD. Be sure to gaze upward and around as you explore, you never know what you may discover.

## HEALTH AND WELLBEING

The Mildura region has a large range of gyms, group fitness, sporting facilities including the Mildura Sporting Precinct, yoga and pilates studios with day spas and wellbeing centres.

## PSYCHE BEND PUMP STATION

Take a tour of the Psyche Bend Pump Station built by the Chaffey brothers. More than 130 years old, the pump station is the only operational one of its kind in the world. For opening dates and running times contact the Mildura Visitor Information Centre.

## THE CHAFFEY TRAIL

The Chaffey Trail offers a captivating heritage adventure encompassing twelve interconnected and historically notable locations. Embark on a journey to uncover the narrative of how the Mildura Region transformed into an irrigated sanctuary amidst its arid surroundings, marking Australia's inaugural irrigation colony. Discover heritage sites, view buildings of interest, and delve into the tales of the individuals and events that shaped this distinctive community.

The Chaffey Trail Sites – Mildura Station Homestead, Station Homestead Cemetery, Rio Vista, Lock 11 Mildura Weir, Wharf Port of Mildura, Grand Hotel, Langtree Hall, Mildura Club, Psyche Pumps, Chateau Mildura, Merbein Connection, Big Lizzie.

For more information, contact the Mildura Visitor Information Centre on 1800 039 043.



## MILDURA HOLDEN MOTOR MUSEUM

Visit the Mildura Holden Motor Museum & Shop for a piece of history. The entire collaboration of the Holden Motor Museum is the result of one man's passion and love for Holden cars. Here you will find a magnificent display of 28-35 Holden vehicles starting from the first model made to current models. The museum also has kids activities, a cafe, and an online store. Open Tuesday to Sunday, 9.30am - 3.00pm.

## RETAIL THERAPY

Of course, you can always meander along the streets of Mildura and do a spot of shopping to relax and unwind. Alternatively, indulge your senses at one of the day spas with a luxurious spa treatment of your choice.

## MURRAY-SUNSET NATIONAL PARK

The Murray-Sunset National Park covers a large area in Mildura's south west and is home to spectacular birdlife and wildlife. This remote and unspoilt corner of northwestern Victoria boasts some of the finest sunsets in the world. Visitors are encouraged to visit the southern section (130kms from Mildura) which includes the picturesque Pink Lakes. The central grass and woodlands can be accessed by 4X4 vehicles. Enjoy walks and camping nearby.

## PINK LAKES

Travel out to the Murray Sunset National Park to see the famous Pink Lakes. Located in the far northwest corner of Victoria, the lakes are a popular attraction for photographers, with their unusual colouring changing throughout the day, from a deep pink to a bright white.

Salt mine relics and mounds of salt have lain abandoned on the edges of the Pink Lakes since operation ceased in 1979. Follow the interpretive signs to learn about the area's salt harvesting industry. Follow Pioneer Drive and take in the best of the Pink Lakes, from Lake Crosbie to Lake Kenyon and Lake Becking.

## LANGTREE HALL MUSEUM

Langtree Hall Museum, constructed in 1889, stands as Mildura's inaugural public hall and holds a significant place in the city's heritage. Explore its historical significance through an impressive exhibit featuring a diverse array of memorabilia, an extensive collection of international dolls, christening gowns, toys, clothing, embroideries, and a captivating assortment of old musical instruments. Open Wednesday, Friday and Saturday 11am - 4pm (or by appointment). Group bookings are welcome.

## MUNGO NATIONAL PARK

You won't see many places on Earth quite like Mungo National Park. Explore the World Heritage Listed Mungo National Park, an area steeped in Aboriginal history and uncover a stark and beautiful landscape of ancient dry lake basins and sand formations.

## ANTIQUES AND COLLECTABLES

The Mildura region is also a mecca for antiques and collectables. Try Antiques at the Manse, The Palace Mildura Antiques, Rose Harvest, Boomerang Book Exchange, Isabella House, and Picture Parlour Gallery and Antiques, just to name a few.

## WENTWORTH PIONEER MUSEUM

Discover Wentworth's heritage at this museum that has a collection of more than 30,000 artifacts and relics covering all aspects on the history of Wentworth. It houses one of Australia's biggest photographic collection on river boats and of Australia's megafauna.

There is a fantastic megafauna display which includes replicas to scale including a Diprotodon, a Procoptodon, a Genyornis and a Thylacoe. Other displays include a 90lb Murray Cod caught in 1971, a 1942 W.L.A. Harley Davidson Motorbike and a paddlesteamer display. A must to see if interested in the pioneering days and river trade in Wentworth.

## WENTWORTH MILITARY COLLECTION

The Wentworth Military Collection is home to the Marching Matilda Experience, a state-of-the-art self-guided audio tour that allows you to discover over 125 years of local, national and International military history. This unique collection displays relics, artefacts, and militaria from all over the world, with an emphasis on Australian service to our nation. From the 1890 Boer War to Afghanistan and current issue.



Pink Lakes, Credit: Visit Mildura



Murray Sunset National Park, Credit: Murray Regional Tourism



Rock Art Sculpture by Paakantji Artist Bagder Bates at Mungo National Park Visitor Centre, Credit: Destination NSW



Pioneer Museum, Wentworth, Credit: Destination NSW



## MILDURA RIVERFRONT

Explore the recently upgraded riverfront. The 1.2kms of parkland along Hugh King Drive has something for everyone including a water play area, barbeque facilities, seating, public art and sculptures, skate park, all-access walking paths, food vendors and outdoor gym equipment. Located on the banks of the mighty Murray River and a short walk from the Mildura CDB, the Mildura Riverfront is an iconic destination. Take a walk on one of the many riverside paths, enjoy a coffee, make a splash at Water Play, or just sit back and soak up the sun. The Mildura Riverfront plays host to a range of regular markets, workshops and activities, and provides an ideal setting for events of all shapes and sizes. The Mildura Riverfront invites you to immerse yourself in its vibrant atmosphere, where there's always something to see and do.

## AUSTRALIAN INLAND BOTANIC GARDENS

Said to be Australia's most unique botanical gardens, the Australian Inland Botanic Gardens boasts a semi-arid composition of both Indigenous and exotic plant species. Perhaps the most alluring feature is the rose garden, which is comprised of 1,600 rose bushes that burst with colour throughout the year. The gardens also have a children's garden with play equipment and a café serving refreshments. A number of events are held within the gardens throughout the year including High Tea. Located along River Road, Mourquong, the gardens are open weekdays 8am - 4pm, weekends 10am - 4pm and free to enter.

## PERRY SANDHILLS

Located 5 minutes from Wentworth, Perry Sandhills boasts 10 hectares of rolling sand dunes of incandescent burnt-orange colouration. Archaeological finds suggest the Barkindji people have inhabited the area since ancient times. The sandhills are worth a visit just to appreciate this awe-inspiring work of nature which is a photographer's paradise. Try sand boarding on the sand dunes which promises fun for all ages.

## KINGS BILLABONG

Bordered by a wide stretch of the Murray River, and home to majestic river red gums and a fantastic variety of birdlife, Kings Billabong features a large, sleepy billabong and is an ideal place to discover nature and its history within minutes of Mildura. Kings Billabong is a popular spot for birdwatching, canoeing, kayaking, photography, fishing and picnics. There are several walking and cycling trails of varying distances to enjoy.

## HATTAH-KULKYNE NATIONAL PARK

The Hattah-Kulkyne National Park is located 75kms south east of Mildura and internationally recognised for its Ramsar site (wetlands). It features a series of lakes surrounded by stately river red gums and is home to over 220 species of bird, including the ibis and the wedge-tailed eagle. The park also boasts a number of walks ranging from 30mins to three hours, along with some spectacular fishing and camping spots.

## BIG DESERT WILDERNESS PARK

The Big Desert is home to a wide variety of birds, reptiles and mammals, ideal for birdwatching and nature study. The park offers a rare opportunity to experience a landscape largely unaffected by human activity. There are no tracks into the park. Some old fire trails are being revegetated and are not suitable for vehicles. A challenge for the experienced hiker, the best approach is by walking from the Nhill-Murrayville Road, which is separated from the park by a 5km strip of public land.

## WYPERFELD NATIONAL PARK

Wyperfeld National Park adjoining Lake Albury Park is further south about 2.5 hours away. It features a chain of dry lakes surrounded by Black Box Woodlands, and is inhabited by a variety of native wildlife. The park is home to the rare mallee fowl.

## MALLEE CLIFFS NATIONAL PARK

Mallee Cliffs National Park, situated approximately 30 kilometres from Mildura, spans over 58,000 hectares in western New South Wales. The park is home to one of the southern hemisphere's largest feral-proof fences and serves as the pioneering location for a groundbreaking mammal reintroduction initiative. Preserving historically abundant vegetation communities in the region, ranging from Spinifex-covered sand dunes to mature Mallee woodlands.



Australian Inland Botanic Gardens, Buronga, Credit: Destination NSW



Perry Sandhills, Wentworth, Credit: Destination NSW



Kings Billabong Boardwalk, Credit: Visit Mildura



Hattah-Kulkyne National Park





# MILDURA'S RICH HISTORY

Mildura has a rich history that stretches back many thousands of years when Aboriginals first inhabited the region.

The traditional inhabitants of the Mildura region are the Ngintait and Latji Latji tribes along with the Barkindji and Wotjobaluk. The river and surrounding lakes near Wentworth are a significant cultural site for local Aboriginals. Many artefacts such as stone tools and shell middens as well as grave sites have been unearthed in and around the lake. This evidence suggests that a great number of Aboriginals once lived off the land surrounding the lake for a substantial length of time. Mungo National Park is also an area steeped in Aboriginal heritage. Be sure to explore both natural attractions whilst you're in the region.

In the late 1800s, Mildura was chosen as the site of the first irrigation project on the Murray River. The Chaffey Brothers came to Australia after Alfred Deakin extolled the potential of the Murray's irrigation whilst visiting Ontario where the Chaffey's were developing an irrigated settlement.

The Chaffey's founded the Mildura Irrigation Colony in 1887 and their two original homesteads are still standing today. These have been beautifully preserved and now form part of the Mildura Arts Centre and Rio Vista House. Apart from the interesting historical displays, the complex houses an excellent collection of Australian and European art, including a pastel by Edgar Degas. The complex is situated on the corner of Chaffey and Cureton Avenues.

The city of Mildura has preserved much of its history, with the Chaffey Trail boasting a self-guided tour which takes visitors through some of the fascinating sights. These include the aforementioned Arts Centre, the Old Mildura Homestead and a reconstruction of the first Mildura station established in 1850. For more information on the Chaffey Trail, call into the Mildura Visitor Information Centre or visit [www.visitmildura.com.au](http://www.visitmildura.com.au)

To further explore Mildura's rich history, check out some of the museums in the area. Try The Langtree Hall Museum Circa 1889, the RAAF Memorial and Museum, the Red Cliffs Military Museum and the Wentworth Military Museum..



# GOL GOL

Just a brief 10-minute drive from Mildura, across the river, lies Gol Gol, a charming township offering serene stretches of river and one of the area's finest pubs, the Gol Gol Hotel, boasting spectacular Murray River vistas. Visitors can dock their houseboats right at the hotel and enjoy a dinner and drinks.

Nearby James King Park offers an ideal setting for picnics, complete with a playground, and serves as a popular launching point for water skiing, thanks to its boat ramp and sandbar. Nature enthusiasts can embark on kayak tours of the surrounding billabongs and creeks, marvelling at the diverse birdlife encountered along the way.

Gol Gol was officially established as a township in 1866, although the allotments were not occupied until the late 1870s. Historically, the town served as a crucial coach stop, playing a vital role in communication and transport within the Wentworth Shire. The Gol Gol Inn, a pivotal establishment, accommodated up to 200 horses at any given time, while a bustling wharf added further vitality to the growing township.

Today, Gol Gol stands as one of the region's rapidly developing towns, fostering a close-knit community centered around light industry. With a current population of approximately 2000 residents, the township boasts essential amenities, including a hotel, garage, general store, primary school, and pre-school. The primary industry in the area revolves around irrigated horticulture, with citrus, vegetables, and grapes being the predominant crops.



## Angie's Pizza

2129 FIFTEENTH STREET, IRYMPLE

**Voted Best Pizza Shop by Locals**

<p><b>Angie's Special</b> Tomato, cheese, pineapple, prawns, capsicum, ham.</p> <p><b>Romarna</b> Tomato, cheese, mushroom, prawns.</p> <p><b>Vegetarian</b> Tomato, cheese, onions, mushrooms, capsicum, olives.</p> <p><b>Mexicana</b> Tomato, cheese, hot salami, mushrooms, olives.</p> <p><b>Aussie</b> Tomato, cheese, ham.</p> <p><b>Tropical</b> Tomato, cheese, ham, pineapple.</p> <p><b>Peter's Special</b> Tomato, cheese, pineapple, ham, hot salami, mushrooms</p> <p><b>Seafood Special</b> Tomato, cheese, anchovies, clams, garlic, prawns.</p> <p><b>Capri</b> Tomato, cheese, ham, mushrooms.</p> <p><b>Irymple Special</b> Tomato, cheese, ham, onion.</p> <p><b>Capricciosa</b> Tomato, cheese, ham, mushrooms, anchovies, olives.</p>	<p><b>Your Choice</b> Four different quarters.</p> <p><b>Maurie's Bomb</b> Tomato, cheese, garlic, hot salami, onions.</p> <p><b>The Lot</b> With the lot.</p> <p><b>Margarita</b> Tomato, cheese, oregano, garlic.</p> <p><b>Meat Lover</b> Salami, ham, bacon, barbeque sauce.</p> <p><b>Chicken</b> Tomato, cheese, mushrooms, onions, barbeque sauce, chicken, pineapple.</p> <p><b>AVAILABLE: SMALL, MEDIUM AND LARGE.</b></p>
---	---

Home Delivery  
Open 7 Days a Week  
4:00pm until Late

**5024 5399**

**priceline  
pharmacy**

Your Priceline pharmacist is here to assist you by giving you advice and talking through your health concerns. From our friendly staff to our trained cosmeticicians, we aim to give you the best advice and recommendations, great prices and the latest products.

**Monday to Friday 9.00am to 6.00pm  
Saturday 9.00am to 12.30pm**

**91 Langtree Avenue, Mildura  
5023 1003**





Walls of China, Mungo National Park, Credit: Tourism Australia/Time Out Australia



Mungo Emu, Credit: Visit Mildura

# MUNGO NATIONAL PARK

The World Heritage Listed Mungo National Park is a magical place steeped in beauty, tranquillity and history. Home to Mungo Woman and Mungo Man, this area is rich with Aboriginal history and is of great significance to the local Indigenous people.

Mungo National Park, located 110kms north east of Mildura, is one of the region's hidden treasures. The spirituality of the place draws on many thousands of years of Indigenous history. Dating back 45,000 years, the Willandra people lived off the land here adjusting to the dryer conditions as the landscape changed.

In 1968, Geologist Jim Bowler discovered the remains of Mungo Lady, the oldest known human to have been ritually cremated. In 1974, the fossilised remains of Mungo Man were also unearthed in the area. Dating back 42,000 years, both remains are the oldest of their kind in Australia and some of the oldest representing modern humans outside of Africa. Ancient footprints from 20,000 years ago were recently discovered in the park, but were subsequently covered over with sand to protect the integrity of the markings. Replicas of the footprints can be seen on display at the visitor centre.

The fascinating dune ridges in the Mungo National Park are called lunettes and were formed more than 100,000 years ago. The age of the terrain is represented by the different colours of the lunettes. The reddish Gol Gol layer denotes a period between 120,000 and 100,000 years ago, the greyish Mungo layer between 50,000 and 25,000 years ago, and the pale brown Zanci layer between 25,000 and 15,000 years ago.

Another feature of the park is the Mungo Woolshed, a shearing shed that was built in 1869. When you enter this colonial structure, you're catapulted back to the cloistering atmosphere of the 1800s – the heat, sweat, smell and noise as thousands of sheep were shorn each year.

Take a guided tour to the incredible Walls of China, where the forces of erosion have intricately shaped sand and clay into delicate yet impressive formations. Alternatively, experience the breathtaking scenery through a cycling or driving tour.

Explore Mungo National Park your own pace or join an organised tour like Tri State Safaris or Outback Geo Adventures. On the lakes' eastern side, there are towering dunes formed from quartz and clay. The most famous of these formations is the colossal Walls of China. Delve into the enchantment of this landmark by taking a guided tour with an Aboriginal ranger, gaining insights into the cultural history of Lake Mungo.

Embark on the remarkable 70km Mungo Self-Guided Drive Tour for a captivating introduction to the extraordinary desert landscape. Starting at the Mungo Visitor Centre, the loop track takes in all the main attractions of the park including the Walls of China boardwalk, Red Top Lookout and Rosewood picnic area. A 4WD vehicle is recommended.

Mungo National Park also boasts an abundance of wildlife, which includes eagles, emus and kangaroos (western grey, eastern grey and red).

Entry to the park costs \$8 per vehicle and as road conditions can change quickly in the outback, some roads into the park can be rendered impassable. For a guided tour of Mungo National Park and to check conditions, call Wentworth Visitor Centre on 5027 5080. Please note that access to the Walls of China is only available with a licensed guide.



# MERBEIN

Situated 12kms from the city of Mildura, Merbein stands on top of the cliffs that overlook the Murray River.

Merbein is Victoria's northern most town and greets you as the state's first town after crossing the border from New South Wales.

Visitors can spend a day at Merbein, which is a popular destination for swimmers, boaters, anglers and picnickers. Visitors can also take in the gorgeous views of the Murray River from the Merbein Lookout – Blandowski Walk.

From the early Aboriginal inhabitants down at Mondellimin, now known as Chaffey's Landing, to the early fauna research of William Blandowski at the same location, Merbein has grown and developed through many varied stages in its history. Blandowski's research laid the foundations for the present day Chaffey's Landing area and the early European and soldier settlements in the way of wine, grape and citrus production.

The latter led to Merbein becoming Victoria's first state-owned pumped irrigation region. From this, the horticultural production in the area grew and the town of Merbein was transformed into the warm, welcoming and supportive community it is today.

This charming town's main street hosts a colourful country market on the third Sunday of each month, 8am to 1pm.



Merbein Cliffs, Credit: Visit Mildura





Perry Sandhills, Wentworth, Credit: Visit Victoria

# WENTWORTH

Wentworth, named after the New South Wales explorer and politician William Charles Wentworth, is located at the confluence of Australia's two largest rivers, the Murray and the Darling.

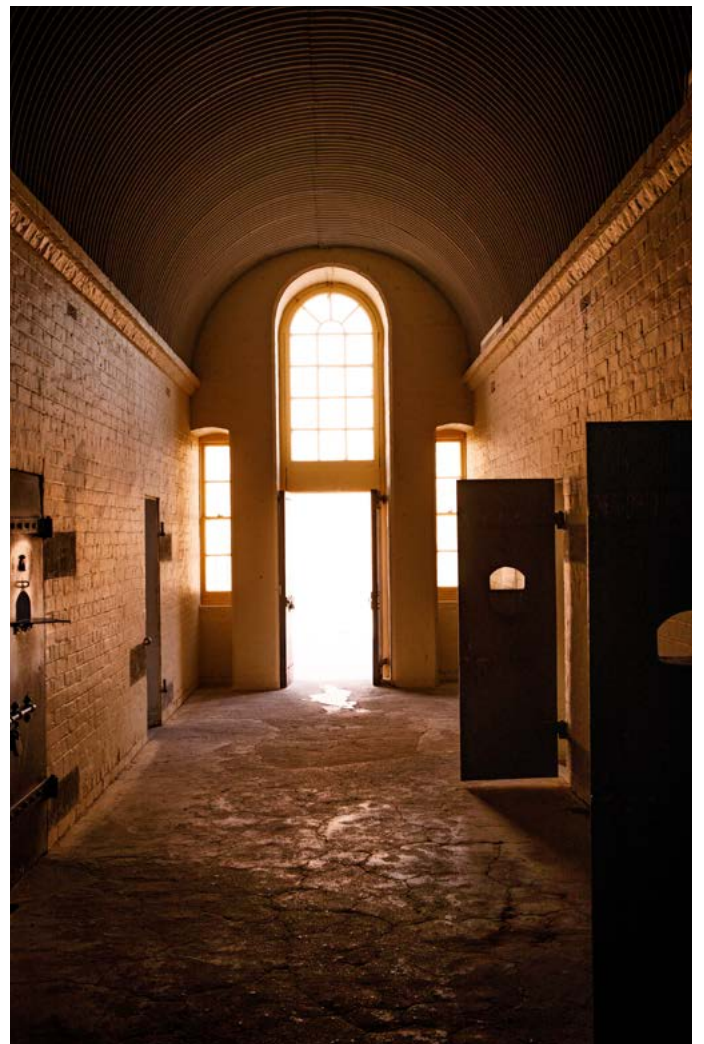
Wentworth, considered the gateway to Outback New South Wales, is a charming township brimming with history and a quirky arts scene. Be sure to check out the Wentworth Pioneer Museum which houses more than 3,000 historical artefacts. Take a stroll to Junction Park where the Darling and Murray Rivers meet. Spot birdlife from the viewing tower in the park.

Wentworth Shire is a region of great diversity and offers visitors the opportunity to experience an introduction to the Australian outback. Here the landscape morphs from lush riverbeds and lagoons to arid and harsh sandy contours.

Magnificent ancient eucalyptus trees that are regal, gnarled and twisted, plentiful wildflowers, kangaroos of grey, blue or red, eagles, hawks, parrots and the beautiful little azure blue finches all make up the unique landscape of this exciting region.

Take the time to travel out to the Perry Sandhills, located 6kms west of Wentworth exiting Old Renmark Road. Reaching 20 metres in height, these iridescent-red sand dunes are a popular landmark in the region and shouldn't be missed. Take the family out for a picnic and a fun day of sliding down the dunes.

Make sure you check out the Wentworth Trail which provides visitors with a detailed itinerary of historical icons and artefacts to peruse in the region. To download a brochure of the trail, go to [visitwentworth.com.au/wentworth-trail](http://visitwentworth.com.au/wentworth-trail)



Inside Wentworth Gaol, Credit: Murray Regional Tourism



# FLAVOURS OF MILDURA

Go on a culinary adventure as you take the gourmet trail that weaves throughout the Mildura region guiding visitors to delicious food and beverage treats.

The Mildura region is a renowned national food bowl, with 75% of Australia's table grapes heralding from the area. Olives, almonds, pistachios, citrus, salt and wine are also produced in abundance. Of course, the region's horticultural success has everything to do with the perfect growing conditions here. Boasting a stable climate, plenty of sunshine, rich soil conditions and the mighty Murray and Darling Rivers to feed horticultural ventures, the region has given rise to a number of exemplary food and beverage offerings.

Gourmet Taste of Mildura Trail is a self-guided food and beverage trail offering the best of what the region has to offer. Start at Sunraysia Cellar Door and then pop into Fossey's Distillery for some gin, whisky, rum or vodka tasting. You can't go past Murray River Salt for gourmet salt flakes or Mildura Chocolate Company to sate your sweet tooth. There's plenty more to discover along the trail such as dried fruit, nuts, olive oil, vinegar, juices, and more.

To download your own Gourmet Taste of Mildura Trail guide, be sure to go to [visitmildura.com.au/VisitMildura/media/PDF-Documents/Itineraries/gourmet-taste-trail.pdf](http://visitmildura.com.au/VisitMildura/media/PDF-Documents/Itineraries/gourmet-taste-trail.pdf)



**Award winning bakery in the heart of Mildura**

Bread, coffee, pastries, cakes and slices.

**Open 7 Days | 5023 2205**

**2 Locations:**

- 210B Deakin Ave, Mildura
- Shop 7, 2109-2111 15th Street Irymple Hub



**pizza cafe**  
at the grand



Wood Fired Pizza | Pasta | Focaccia  
Salads | Cakes | Coffee | Ice Cream

**SCAN TO ORDER YOUR DELIVERY  
OR PICK UP ONLINE**



[www.pizzacafe.com.au](http://www.pizzacafe.com.au)

**DINE IN, TAKE AWAY & DELIVERY**

**5022223**

**18 LANGTREE AVE, MILDURA**





Trentham Estate Winery, Credit: Murray Regional Tourism



Trentham Estate Winery, Credit: Murray Regional Tourism

# FOOD, WINE & DINING OUT

From the arid Mallee bushland brought to life in the 1880s by the Chaffey brothers' Murray River irrigation scheme, Mildura has matured into a vibrant regional city.

For anyone visiting Mildura, it's well worth checking out 'Feast Street' located on Langtree Avenue. Here you can dine on anything from fast food, Italian or world-class cuisine. Honoured with a chef's hat, be sure to visit the iconic eatery Stefano's for an amazing foodie experience or The Provence by Matt DeAngelo. The Mildura riverfront connection enables visitors to meander from Feast Street down to the riverfront precinct for beautiful views of the Murray and more dining options.

Roadside stalls still operate along the network of roads surrounding the Mildura region. The kind of produce sold varies from table grapes, oranges and mandarins to vegetables such as asparagus, pumpkins, and carrots. The lesser-known local delicacies in the region, such as locally marinated olives, spicy pistachios and in-demand Murray River Salt, can be found at the Sunraysia Farmers' Market and various fine food outlets. Discover Mildura offers a guided farmgate tour. For more information, call (03) 5024 7448 or visit [discovermildura.com.au](http://discovermildura.com.au)

One of the major attractions in the Mildura region is undoubtedly the premium wines produced in the area. The region is home to some of the best-known wineries in Australia, some of which are open for tastings, tours and cellar-door sales.

Located in Mildura's most iconic and historical buildings of The Setts, Fossey's is home to Mildura's first and only Gin Garden and Gin & Whisky Bar. Embracing family history, sensational local produce and exceptional story telling through the art of Gin & Whisky Swilling and Distilling, Fossey's has truly embraced the Australian Gin and Whisky culture.

Trentham Estate Winery, just over the NSW border, features an à la carte restaurant open for lunch Wednesday to Sunday with one of the best panoramic views of the Murray. There is also a cruise to the winery available from Mildura wharf each Thursday.



# PARKS & WALKS

## MILDURA RIVERFRONT PRECINCT

There is always something to see and do on the Mildura Riverfront. Located on the banks of the mighty Murray River and a short walk from the Mildura CBD, the Mildura Riverfront is an iconic destination. Take a walk on one of the many riverside paths, enjoy a coffee, make a splash at Water Play, or just sit back and soak up the warm winter sun. The Mildura Riverfront plays host to a range of regular markets, workshops and activities, and provides an ideal setting for events of all shapes and sizes.

## MURRAY SUNSET NATIONAL PARK

Murray-Sunset National Park, in Victoria's far north-west corner, is in one of the few remaining semi-arid regions in the world where the environment is relatively untouched. With its wide open landscapes, breathtaking sunsets and starry nights, its vastness and isolation will take more than a day to explore. This is a great park for four wheel drive touring, bushwalking and camping.

## AUSTRALIAN INLAND BOTANIC GARDENS

The Australian Inland Botanic Gardens showcases a range of Australian natives from both arid and higher rainfall areas as well as exotic species, including a rose garden featuring over 1,600 colour co-ordinated bushes.

Enjoy a tractor-train tour through the gardens every Saturday at select times and the Garnpang Homestead and coffee shop is open daily where you can enjoy a coffee or lunch and browse through the selection of handcrafted gifts.

There is also a children's garden comprised of play equipment made from recycled materials, a cubby house, sand pit and musical instruments. There is no entrance fee, but a donation for the garden's maintenance is welcome.

## MUNGO MOUNTAINLESS BIKE LAKEBED LOOP TRAIL

**Distance:** 35 km

**Difficulty:** Moderate

Embark on an exhilarating 35km mountain biking journey through the captivating Willandra Lakes World Heritage region in Outback NSW. Beginning at the Mungo Visitor Centre, traverse the dried base of Lake Mungo, marvel at stunning dune formations, and keep an eye out for wildlife. Explore the historic Zanci Homestead site and visit other popular attractions along the way. The lakebed can be a bit soft and dusty in places and what the trail lacks in elevation challenge is certainly made up for in other ways.

Whether at sunrise or sunset, this adventure promises an unforgettable experience in a landscape steeped in ancient history and natural wonder.

A moderate level of fitness is required. This is a long, challenging trail designed for experienced mountain bike riders. Ensure you to take enough water, puncture repair gear and pump, clothes for all weather conditions, sunscreen and snacks. Allow 3-4 hours. Park entry fees apply.

## KINGS BILLABONG NATURE WALKS, NICHOLS POINT

**Distance:** From 1.7km to 9.2km

**Difficulty:** Easy to Moderate

Kings Billabong is a popular spot for walking, cycling and birdwatching. An excellent option for those looking for an easier walking trail, there is signage that leads to various walks and the signs show how long each track is.

Within 2000 hectares of Park, there are abundant pathways, dotted with benches and information points. The loops track past river red gums, keeping an eye out for the region's waterbirds, including ducks, spoonbills and kingfishers, and birds of prey such as whistler kites and marsh harriers.

The longer 9.2 km return trail wanders through the river red gums to the historic water pumps at Psyche Bend. Along the way, stop at Bag Bridge for a picnic or a rest and take in the surroundings.

Terry White Chemmart Mildura



**TerryWhite  
Chemmart™**

**204 Deakin Avenue, Mildura**

**FOR ALL YOUR  
PHARMACEUTICAL  
NEEDS**

**OPEN**

**Monday to Saturday  
9am to 8pm**

**Sunday & Public Holidays  
9am to 5pm**

**(DEAKIN AVE ONLY)**

**NDSS**  
national diabetes services scheme



TATTSLOTTO AGENCY



**Opposite Henderson Park  
(NEAR 13TH STREET DEAKIN AVE TRAFFIC LIGHTS)**

**Tel: 5021 2161**

## APEX PARK

Apex Park is where you'll find the only inland life-saving club around, plus walking paths, a sandbar, and public bathrooms. There's even a caravan park nearby. It's the perfect spot for a laid-back family day by the river.

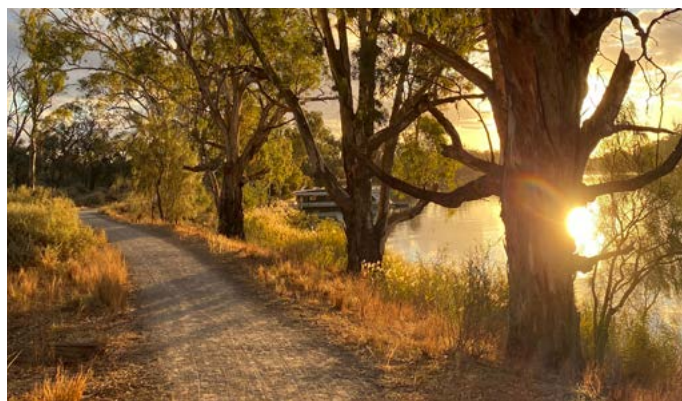
## MERBEIN COMMON, RIVER MURRAY RESERVE

Merbein Common is a floodplain reserve nestled in a bend of the Murray River. The area has a series of nationally significant wetlands, diverse landscapes including riverine vegetation, billabongs and small patches of native pine. Hardy black box and river red gums are abundant along with many fish, birds and animals.

The Merbein Common Walk is a 3.9km loop trail generally considered an easy route taking an average of 48 min to complete. This trail is peaceful and quiet and is great for hiking, running, and walking.



For parks and walks, go to  
[www.mildura.vic.gov.au/Explore/Parks-and-recreation](http://www.mildura.vic.gov.au/Explore/Parks-and-recreation)



River Path, Credit: Visit Mildura



# DAY TRIPS

Red Cliffs, Credit: Murray Regional Tourism

## ROBINVALE

📍 89 km 🚗 1 hr 5 min

Robinvale is a town on the south bank of the Murray River on the Victorian side between Swan Hill and Mildura.

- Southern Cross Windmill
- Robinswood Homestead
- Rural Life Museum
- Belsar Island

## RENMARK

📍 138 km 🚗 1 hr 32 min

With heritage walks, shopping, river cruises and parks, there is something for everyone. Dining options are plentiful.

- Headings cliffs Lookout
- Matulick Riverfront Trail
- Olivewood Historic Homestead
- Hotel Renmark Museum



## RED CLIFFS

📍 14 km 🚗 15 min

Take a short trip to Red Cliffs, a relaxed country town 13km south of Mildura. The township was established following World War 1 as a Soldier Settlement, with blocks of land allocated to 700 returned soldiers, making it the largest soldier settlement in Australia. The land was cleared and developed into an irrigation settlement planted largely to grapes for dried fruit. Today Red Cliffs continues to be involved in the horticulture industry.

- Big Lizzie
- Red Cliffs Scenic Reserve
- Red Cliffs Military Museum

## BROKEN HILL

📍 296 km 🚗 3 hrs 4 mins

The modern Broken Hill is more than just a mining town. It is a lush oasis of green parks in a desert and boasts a vibrant art scene. It is also a town that remembers its Aboriginal heritage, and offers easy access to unique national parks.

Increasingly tourists are travelling to Broken Hill to experience for themselves the unusual outback township that has been the scene for films including Mad Max II and Priscilla Queen of the Desert.

- Miners' Memorial
- Day Dream Mine
- Sandstone Sculptures





# EVENTS

## JANUARY

Australia Day Celebrations

## FEBRUARY

Victorian Super Sedan Title & Wingless Sprints

Australian Sprintcar Allstar Series

Summit Racing Equipment Sportsman Series  
Drag Racing

## MARCH

Mildura Easter Tennis Tournament

Mildura 100 Ski Race

Shane Doherty Memorial Tri-State Masters  
Golf Tournament

Mildura Easter Powersports Show & Shine

Timmis Speedway Feature Events

ChangeFest

Festa Della Vendemmia

Sprintcar Easter Nationals

Wakeboard Australia National Title

Collective Movements

Wentworth Mildura Joint Regatta

## APRIL

Collective Movements

U14 Junior Country Basketball  
Championships

Cullulleraine Music Festival

360 Sprintcars Allstar Series

Mildura Pacing Cup Carnival

Easter Powersports Weekend

SARG Paws Along the Murray

## MAY

Mother's Day Classic

Mildura Bowls Club May Carnival

All Power Nationals

Melbourne International Comedy Festival  
Roadshow

Mildura Eisteddfod

Mildura Field Days

May Bowls Carnival

*i*

For the most up to date  
Calendar of Events and dates,  
go to [eventsmildura.com.au](https://eventsmildura.com.au)

## JUNE

Mildura Eisteddfod

Mildura Riverfront Marathon

Country Leagues Football Association

Country Championships

Matsumura Blues Festival

## JULY

Mildura Zine & Art Fair

Hattah Desert Race

Mildura Writers Festival

Sunraysia Gang Show

## AUGUST

Great Australian Vanilla Slice Triumph

Wentworth Show

## SEPTEMBER

Annual Gem & Jewellery Show

Mildura Wentworth Country Music Festival

Ouyen Mallee Root Festival

Mildura Air Show

Pooncarie Cup

## OCTOBER

SemiArid SOUND

A Festival of Lights

The Pink Ball

Mildura Show

Merbein Rodeo

Goanna Run / Rod Run

## NOVEMBER

Red Hot Summer Tour

Melbourne Cup Day at Mildura

Australian Alternative Varieties Wine Show

Murray Darling 110 – Ted Hurley Ski Race

Mildura Classic Wakeboard Event

Merbein Community Hall Motor Show

## DECEMBER

Back to Base Sunraysia Multicultural Festival

Willowfest Australian Cricket Club  
Championships

Mildura Carols by Candlelight

New Year's Eve Celebrations

## REGULAR EVENTS

### Mildura Weir Park Run

A free, weekly, timed 5km walk/jog/run at  
8am every Saturday. Open to all ages and  
abilities.

Boats, Credit: Visit Mildura | Wake Boarding, Credit: Visit Mildura



Fishing, Credit: Visit Mildura





Market, Credit: Visit Mildura

## REGIONAL

# MARKETS

### Sunraysia Farmers' Market

Held on the 1st and 3rd Saturday of every month, 8am to noon, the region's producers come together at the Sunraysia Farmers' Market. Located at the Mildura Riverfront - Jaycee Park on Hugh King Drive, you'll find fresh seasonal produce, gourmet food items, plants, cut flowers and much more. Try the famous breakfast.

### Red Cliffs Country Market

Held on the 1st Sunday of every month, 9am to 1pm, the Red Cliffs Country Market offers a fantastic carnival experience for visitors. Many of the local businesses are open as well as over 100 market stalls to browse through. There is local entertainment, which varies each month, including kids activities.

### Merbein Street Market

Held on the 3rd Sunday of every month from 8am to 1pm. Situated on Commercial Street and Pit Stop Forecourt in Merbein. Get along and enjoy all that Merbein has to offer.

# ESSENTIAL SERVICES

## EMERGENCY SERVICES

Police / Ambulance / Fire 000

## POLICE

Mildura Police Station (03) 5018 5300  
62-68 Deakin Ave, Mildura

Wentworth Police Station (03) 5027 3102  
74 Darling St, Wentworth

Merbein Police Station (03) 5025 2201  
119 Commercial St, Merbein

## HOSPITALS

Mildura Base Hospital (03) 5022 3333  
Ontario Ave & Thirteenth St, Mildura

Wentworth District Hospital (03) 5027 5700  
24 Hospital Road, Wentworth

## MEDICAL CENTRES

Ontario Medical Clinic (03) 5023 7311  
196-200 Ontario Ave, Mildura

Lime Medical Clinic (03) 5023 5122  
154 Lime Ave, Mildura

Wentworth Community Health Centre (03) 5027 2345  
Silver City Hwy, Wentworth

## DENTIST

Lime Dental (03) 5023 1317  
160 Lime Ave, Mildura

Tankard Dental (03) 5022 2933  
155 Langtree Ave, Mildura

## PHARMACIES

TerryWhite Chemmart  
204 Deakin Ave, Mildura (03) 5021 2161  
53-55 Ilex St, Red Cliffs (03) 5024 1441

Chemist Warehouse  
114A-118 Langtree Ave, Mildura (03) 5023 2383  
Shop 5B, Mildura Homemaker Centre, (03) 5022 9872  
Benetook Ave, Mildura  
Shop G002 Mildura Central Shopping Centre, (03) 8527 1758  
Deakin Ave, Mildura

## TRANSPORT

Mildura Taxis (03) 5023 0033  
City Taxis Sunraysia (03) 5022 2000



**Angels Oriental Massage**  
*Relax, Heal & Rejuvenate*

**Indulge yourselves in Balinese ambience. Enjoy 5-Star service.**  
**GOOD VALUE FOR MONEY.**




**Angels 1 @**  
61 Orange Avenue, Mildura  
Tel: 03 5023 7776 / 0452 261 636

**Angels 2 @**  
Back of 151 Madden Avenue, Mildura  
Tel: 0438 408 562

**Mildura Angels Oriental Massage**  
[www.angelspa.com.au](http://www.angelspa.com.au)





**JUST BRILLIANT GUIDES**

**FIND YOUR WAY**



HOSPITALITY INDUSTRY SPECIALISTS



We respect and honour Aboriginal and Torres Strait Islander Elders past, present and future. We acknowledge the stories, traditions and living cultures of Aboriginal and Torres Strait Islander peoples on this land and commit to building a brighter future together.

The information contained in this publication is provided as a guide only. Although every effort has been made to ensure the accuracy of the information, John Batman Group disclaims any liability or responsibility for the accuracy of the information contained herein. Advertising material appearing in this publication is supplied by the operator or service provider and John Batman Group is not responsible for the accuracy of advertising content.

This guest services room publication is compiled and produced by John Batman Group, publishers of specialist room directories and magazines.

John Batman Group and Just Brilliant Guides are trademarks of Frankie119 Pty Ltd.

Compiled with the assistance of the Mildura Rural City Council

Images courtesy of Murray Regional Tourism, Visit Mildura, Visit Victoria, Destination NSW and Tourism Australia.

Front Cover Image: Mildura Riverfront, Credit: Mildura Rural City Council

Back Cover Images: Kayaking Kings Billabong, Credit: Visit Mildura | Red-Cliffs, Credit: Murray Regional Tourism | Mildura Riverfront, Credit: Murray Regional Tourism

© Copyright all rights reserved. JBG-X

**FREECALL 1800 339 493 | [johnbatman.com.au](http://johnbatman.com.au)**





# ACCOMMODATION GUIDE

## ACACIA HOLIDAY APARTMENTS & CABINS

761 Fifteenth Street, Mildura VIC 3500  
03 5023 3855  
[www.acaciaapartments.com.au](http://www.acaciaapartments.com.au)

## ALL SEASONS HOLIDAY PARK

818 Fifteenth Street, Mildura VIC 3500  
03 5023 3375  
[www.allseasonsholidaypark.com.au](http://www.allseasonsholidaypark.com.au)

## ALL SEASONS HOUSEBOATS

1 Dockside Marina, Mildura vic 3500  
03 5023 3375  
[www.allseasonshouseboats.com.au](http://www.allseasonshouseboats.com.au)

## AQUARIUS APARTMENTS & CABINS

836A Fifteenth Street, Mildura VIC 3500  
03 5021 4822  
[www.aquariusapartments.com.au](http://www.aquariusapartments.com.au)

## BEST WESTERN CHAFFEY MOTOR INN

244 Deakin Avenue, Mildura VIC 3500  
03 5023 5833  
[www.chaffeymotorinn.com.au](http://www.chaffeymotorinn.com.au)

## BIG4 MILDURA GETAWAY HOLIDAY PARK

478 Deakin Avenue, Mildura VIC 3500  
03 5023 0486  
[www.big4.com.au/caravan-parks/vic/murray/mildura-getaway-holiday-park](http://www.big4.com.au/caravan-parks/vic/murray/mildura-getaway-holiday-park)

## BIG4 NRMA MILDURA RIVERSIDE HOLIDAY PARK

199/205 Flora Avenue, Mildura VIC 3500  
03 5021 2299  
[www.nrmaparksandresorts.com.au/mildura-riverside](http://www.nrmaparksandresorts.com.au/mildura-riverside)

## BOULEVARD MOTOR INN

385 Deakin Avenue, Mildura VIC 3500  
03 5023 5023  
[www.boulevardmotorinn.com.au](http://www.boulevardmotorinn.com.au)

## CALDER TOURIST PARK

775 Fifteenth Street, Mildura VIC 3500  
03 5023 1310

## CENTRAL MOTEL MILDURA

125 Madden Avenue, Mildura VIC 3500  
03 5021 1177

## CITY COLONIAL MOTOR INN

24-30 Madden Avenue, Mildura VIC 3500  
03 5021 1800  
[www.citycolonial.com.au](http://www.citycolonial.com.au)

## COACHMAN TOURIST PARK

2163 Calder Highway, Irymple VIC 3498  
03 5024 5316  
[www.coachmanpark.com.au](http://www.coachmanpark.com.au)

## COMFORT INN DEAKIN PALMS

413 Deakin Avenue, Mildura VIC 3500  
03 5023 0218  
[www.choicehotels.com/en-uk/victoria/mildura/comfort-inn-hotels/au671](http://www.choicehotels.com/en-uk/victoria/mildura/comfort-inn-hotels/au671)

## COMMODORE MOTEL MILDURA

18 Deakin Avenue, Mildura VIC 3500  
03 5023 0241  
[www.commodoremildura.com.au](http://www.commodoremildura.com.au)

## COOMEALLA MOTEL AND CARAVAN PARK RESORT

1788 Silver City Highway, Dareton NSW 2717  
03 5027 4737  
[www.coomeallclub.com.au](http://www.coomeallclub.com.au)

## COTTONWOOD MOTOR INN

326 Deakin Avenue, Mildura VIC 3500  
03 5023 5166  
[www.cottonwoodmotorinn.com.au](http://www.cottonwoodmotorinn.com.au)

## DARLING JUNCTION MOTOR INN

26 William Street S, Wentworth NSW 2648  
03 5027 3636

## EARLY AUSTRALIAN MOTOR INN

453/455 Deakin Avenue, Mildura VIC 3500  
03 5021 1011  
[www.earlyaustralianmotorinn.com.au](http://www.earlyaustralianmotorinn.com.au)

## ECONO LODGE MILDURA

433 Deakin Avenue, Mildura VIC 3500  
03 5023 3266  
[www.choicehotels.com/en-uk/victoria/mildura/econo-lodge-hotels/au751](http://www.choicehotels.com/en-uk/victoria/mildura/econo-lodge-hotels/au751)

## MERCURE HOTEL MILDURA

120 Eighth Street, Mildura VIC 3500  
03 5051 2500  
[www.all.accor.com/hotel/7509/index.en.shtml](http://www.all.accor.com/hotel/7509/index.en.shtml)

## MID CITY PLANTATION MOTEL

145 Deakin Avenue, Mildura VIC 3550  
03 5023 0317  
[www.midcityplantationmotel.com.au](http://www.midcityplantationmotel.com.au)

## MILDURA MOTOR INN

376 Deakin Avenue, Mildura VIC 3500  
03 5023 7377  
[www.milduramotorinn.com.au](http://www.milduramotorinn.com.au)

## MILDURA PLAZA MOTOR INN

836 Calder Highway, Mildura VIC 3500  
03 5021 1155  
[www.milduraplaza.com.au](http://www.milduraplaza.com.au)

## MILDURA RIVERVIEW MOTEL

72-74 Adelaide Street, Gol Gol NSW 2739  
03 5024 8778  
[www.mildurariverview.traveleto.com](http://www.mildurariverview.traveleto.com)

## ORANA MOTOR INN

2101 Fifteenth Street, Irymple VIC 3498  
03 5024 5903  
[www.oranamotorinn.com](http://www.oranamotorinn.com)

## QUALITY HOTEL MILDURA GRAND

129-137 Seventh Street, Mildura VIC 3500  
03 5023 0511  
[www.choicehotels.com/en-uk/victoria/mildura/quality-inn-hotels/au687](http://www.choicehotels.com/en-uk/victoria/mildura/quality-inn-hotels/au687)

## QUALITY RESORT INLANDER MILDURA

373 Deakin Avenue Mildura, Victoria 3500  
03 5023 3823  
[www.mildurainlanderresort.com.au](http://www.mildurainlanderresort.com.au)



# ACCOMMODATION GUIDE

**QUEST MILDURA**

115/119 Madden Avenue, Mildura VIC 3500  
03 5002 0900

[www.questapartments.com.au/properties/vic/mildura/quest-mildura](http://www.questapartments.com.au/properties/vic/mildura/quest-mildura)

**RED CLIFFS COLONIAL  
MOTOR LODGE**

17 Jacaranda Street, Red Cliffs VIC 3496  
03 5024 1060

[www.redcliffsmotel.com](http://www.redcliffsmotel.com)

**RIVER CITY MOTEL**

830 Fifteenth Street, Mildura VIC 3500  
03 5023 5177

[www.mildurarivercitymotel.com.au/home.php](http://www.mildurarivercitymotel.com.au/home.php)

**RIVER END HOLIDAY PARK**

30-40 Cureton Avenue E, Mildura VIC 3500  
0431 837 114

[www.riverendholidaypark.com.au](http://www.riverendholidaypark.com.au)

**RIVERGARDENS HOLIDAY PARK**

11 Punt Rosd, Gol Gol NSW 2738  
03 5024 8541

[www.rivergardensholidaypark.com.au](http://www.rivergardensholidaypark.com.au)

**SANDORS MOTOR INN**

179 Deakin Avenue, Mildura VIC 3500  
0499 901 382

[www.sandorsmotorinn.com](http://www.sandorsmotorinn.com)

**SEVENTH STREET MOTEL MILDURA**

153 Seventh Street, Mildura VIC 3500  
03 5021 1888

[www.7thstreetmotelmildura.com.au](http://www.7thstreetmotelmildura.com.au)

**SUN RIVER RESORT MOTEL**

5 Silver City Highway, Buronga NSW 2739  
0407 409 907

**SUNRAYSIA RESORT**

300 Tenth Street, Mildura VIC 3500  
03 5021 9600

[www.sunraysia-resort.com.au](http://www.sunraysia-resort.com.au)

**TWO RIVERS MOTEL**

198 Adams Street, Wentworth NSW 2648  
03 5027 3268

**VINELAND MOTEL**

363-365 Deakin Avenue, Mildura VIC 3500  
03 5023 4036

**WENTWORTH GRANDE RESORT**

61-79 Darling Street, Wentworth NSW 2648  
03 5027 2225

[www.wentworthgranderesort.com.au](http://www.wentworthgranderesort.com.au)